



## SERIES 200™ - HONEYCOMB CORE

Series 200 Panels feature an Aluminum or sheet steel formed panel backed by a fully adhered Aluminum honeycomb core. The panels attach with Stainless Steel fasteners to metal framing. All panel joints are sealed with Polyurithane or Butyl Tape for a weather-tight exterior cladding system.

### MATERIALS

- Zinc
- 20-32 oz. Copper
- 0.04 Aluminum
- 22ga. Pre-Finished Sheet Metal
- 22ga. Stainless Steel
- Other materials upon request

### SIZES

- Maximum Panel size 3'- 9" x 9'- 8"
- Optimum Panel widths 21" & 13"
- Optimum Panel lengths 117", 57" & 37"

### WEIGHT

22g sheet metal skin has an average weight of 1.3 psf

### PANEL RATING

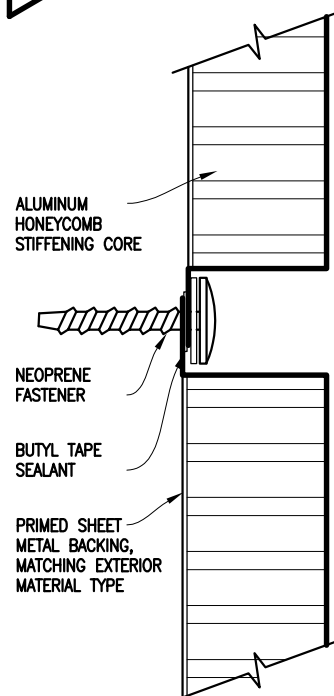
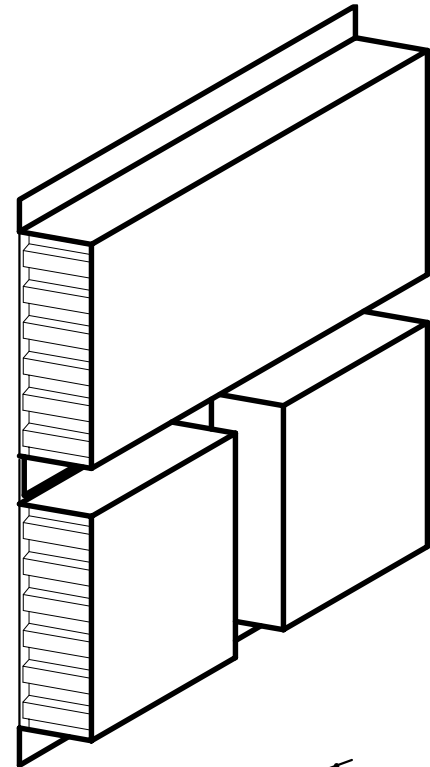
- AAMA 501 Standards include:
- ASTM E283 Air Penetration
- ASTM E331 Water Penetration
- ASTM E330 Structural Performance
- AAMA 501.4 Seismic Movement

### LEED

- Possibly contribute to the following LEED credits:
- MR 4 - Recycled Content
- SS7.2 - Cool color paint system
- MR 5 - Regional Manufacturing

### FEATURES & BENEFITS

- Ease of installation
- Cost effective alternate to composite panels
- Non progressive installation allows for ease of installation of damaged panels
- Little to no maintenance required
- 20 year Paint Warranty



ALL supporting documents can be downloaded at [pdx-panels.com](http://pdx-panels.com) or sent directly to email via QR code.



SERIES 200 PANEL SYSTEM  
19140 NE PORTAL WAY  
PORTLAND OR 97230-5383  
PHONE: (503) 914-0210  
FAX: (971) 266-8296  
WWW.PDX-PANELS.COM

# *PDX SERIES 200™ - HONEYCOMB CORE*

SERIES 200	THESE DETAILS ARE FOR BASIC DESIGNS CONCEPTS ONLY
D-A	TABLE OF CONTENTS
D-B	REFERENCE ELEVATION
D-1	TYPICAL VERTICAL JOINT/REVEAL
D-2	TYPICAL HORIZONTAL JOINT/REVEAL
D-3	TYPICAL PARAPET
D-4	TYPICAL WINDOW HEAD
D-5	TYPICAL WINDOW SILL
D-6	TYPICAL WINDOW JAMBS
D-7	TYPICAL BASE
D-8	TYPICAL END WALL
D-9	TYPICAL INSIDE CORNER
D-10	TYPICAL SOFFIT
D-11	TYPICAL OUTSIDE CORNER
D-12	TYPICAL RECTANGULAR COLUMN COVER

CAD/.DWG standard details available upon request.

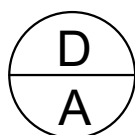
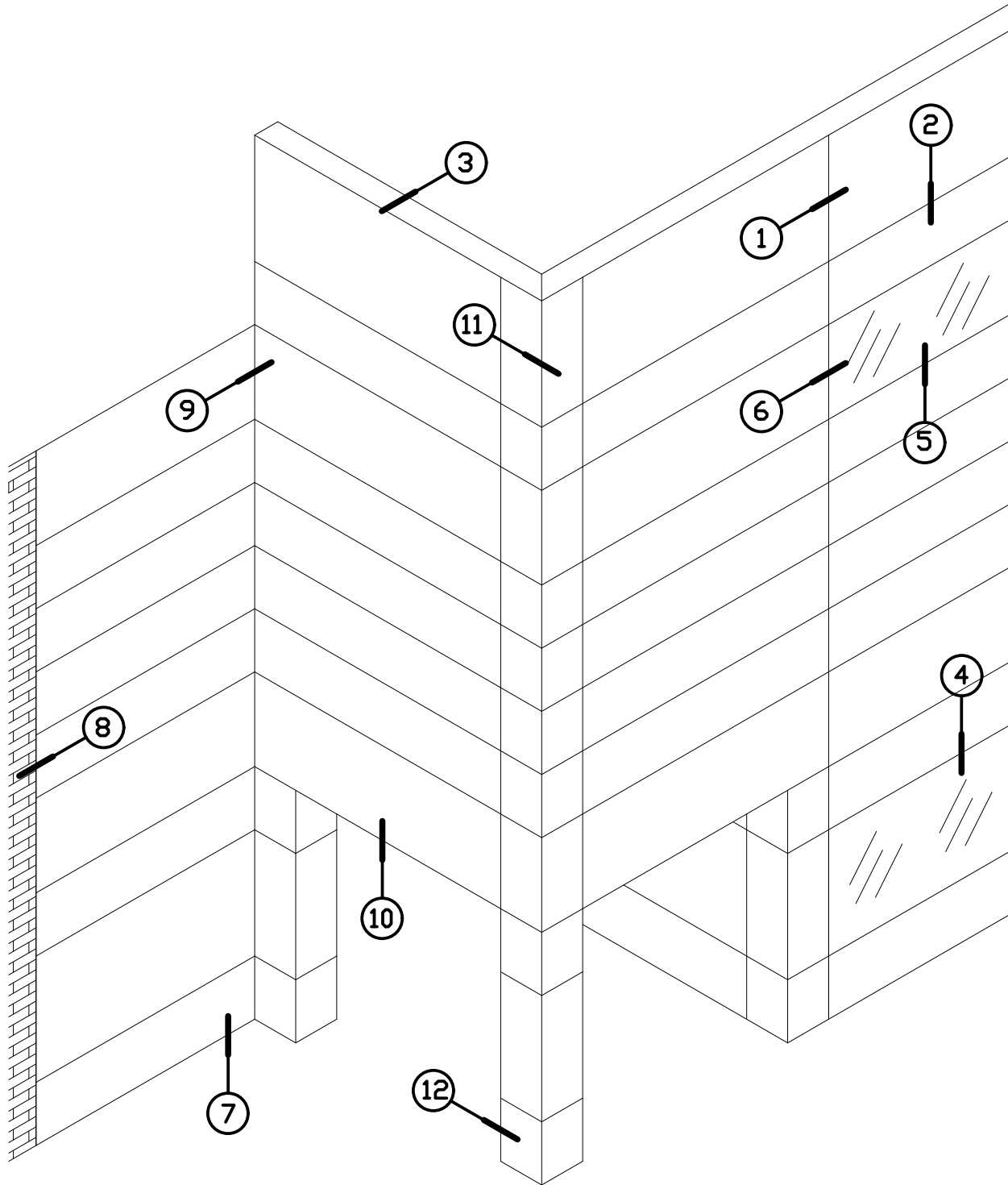
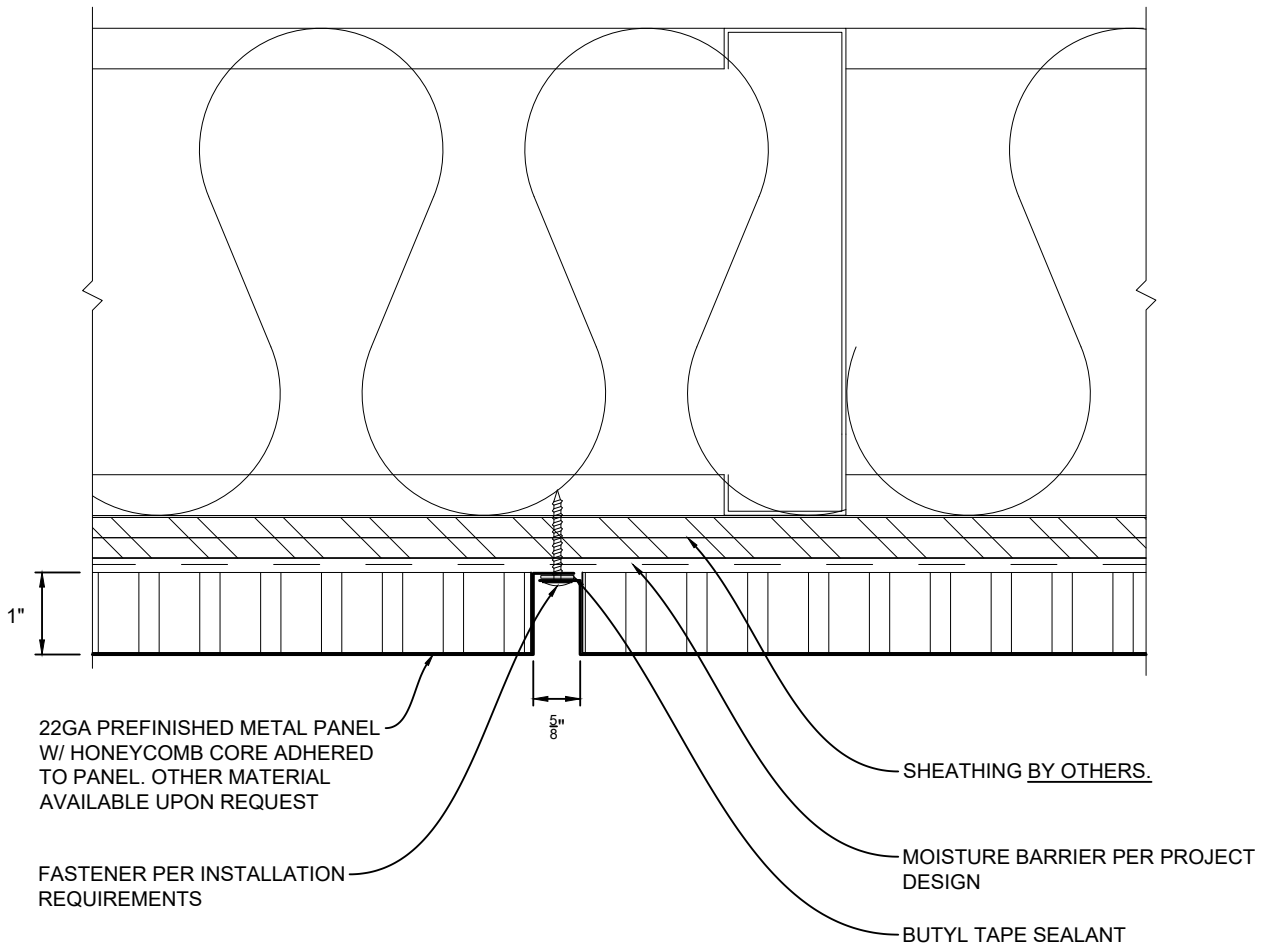


TABLE OF CONTENTS

PDX SERIES 200 WALL SOLUTION

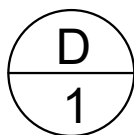


**D** REFERENCE ELEVATION  
**B** PDX SERIES 200 WALL SOLUTION



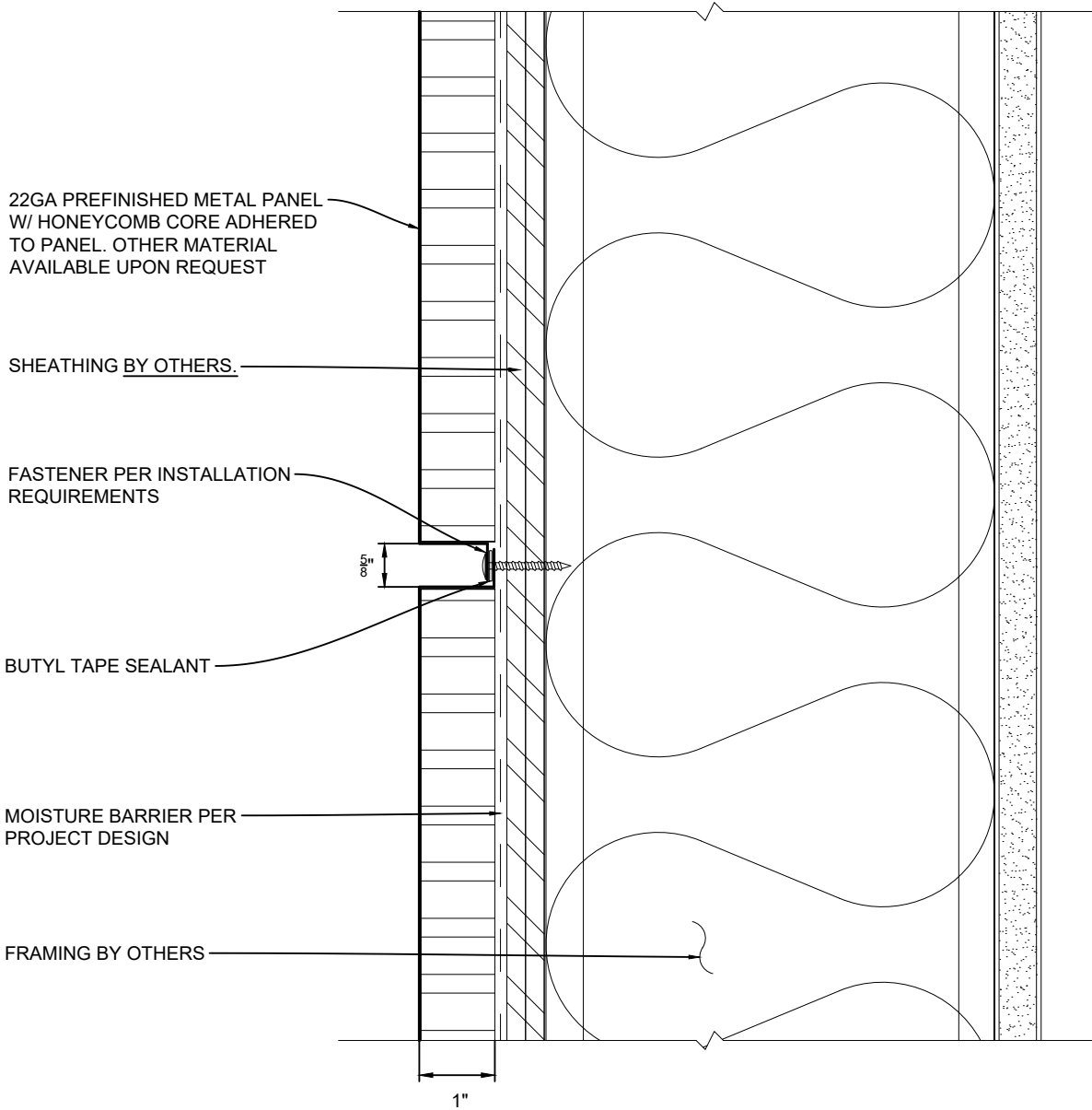
NOTES:

1. INSTALLATION TO BE COMPLETED IN ACCORDANCE WITH MANUFACTURER'S SPECIFICATIONS.
2. DO NOT SCALE DRAWING.
3. THIS DRAWING IS INTENDED FOR USE BY ARCHITECTS, ENGINEERS, CONTRACTORS, CONSULTANTS AND DESIGN PROFESSIONALS FOR PLANNING PURPOSES ONLY. THIS DRAWING MAY NOT BE USED FOR CONSTRUCTION.
4. ALL INFORMATION CONTAINED HEREIN WAS CURRENT AT THE TIME OF DEVELOPMENT BUT MUST BE REVIEWED AND APPROVED BY THE PRODUCT MANUFACTURER TO BE CONSIDERED ACCURATE.
5. CONTRACTOR'S NOTE: FOR PRODUCT AND COMPANY INFORMATION VISIT [WWW.PDX-PANELS.COM](http://WWW.PDX-PANELS.COM)



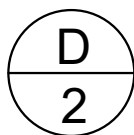
TYPICAL VERTICAL JOINT/REVEAL

PDX SERIES 200 WALL SOLUTION



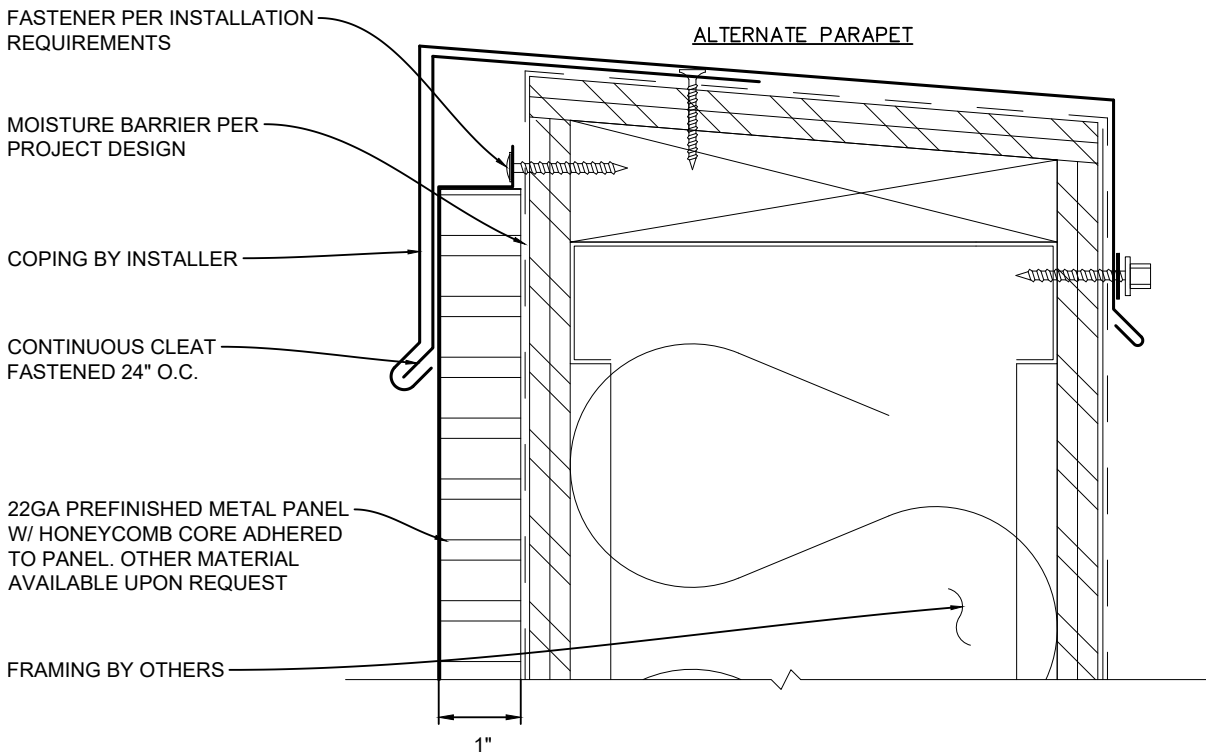
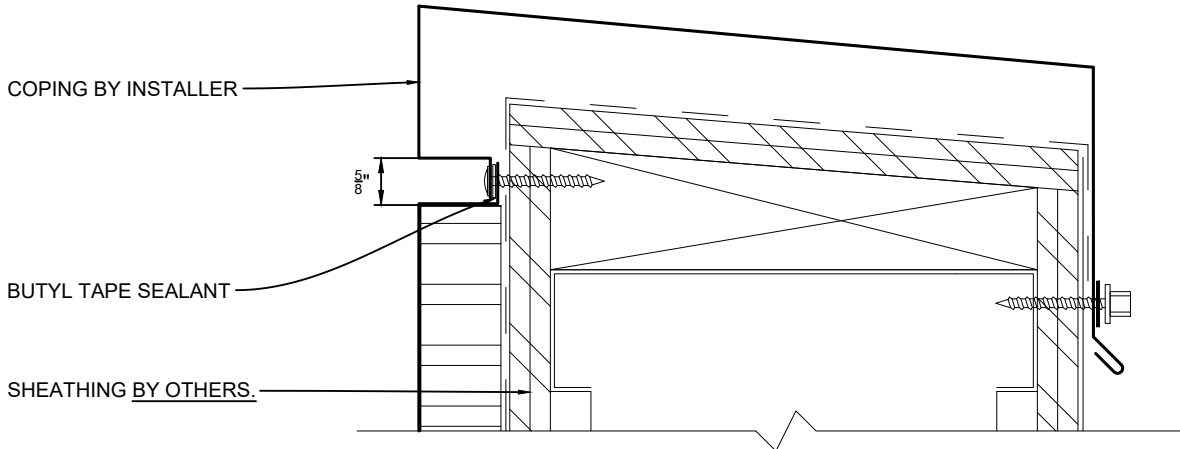
NOTES:

1. INSTALLATION TO BE COMPLETED IN ACCORDANCE WITH MANUFACTURER'S SPECIFICATIONS.
2. DO NOT SCALE DRAWING.
3. THIS DRAWING IS INTENDED FOR USE BY ARCHITECTS, ENGINEERS, CONTRACTORS, CONSULTANTS AND DESIGN PROFESSIONALS FOR PLANNING PURPOSES ONLY. THIS DRAWING MAY NOT BE USED FOR CONSTRUCTION.
4. ALL INFORMATION CONTAINED HEREIN WAS CURRENT AT THE TIME OF DEVELOPMENT BUT MUST BE REVIEWED AND APPROVED BY THE PRODUCT MANUFACTURER TO BE CONSIDERED ACCURATE.
5. CONTRACTOR'S NOTE: FOR PRODUCT AND COMPANY INFORMATION VISIT [WWW.PDX-PANELS.COM](http://WWW.PDX-PANELS.COM)



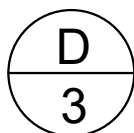
## TYPICAL HORIZONTAL JOINT/REVEAL

PDX SERIES 200 WALL SOLUTION



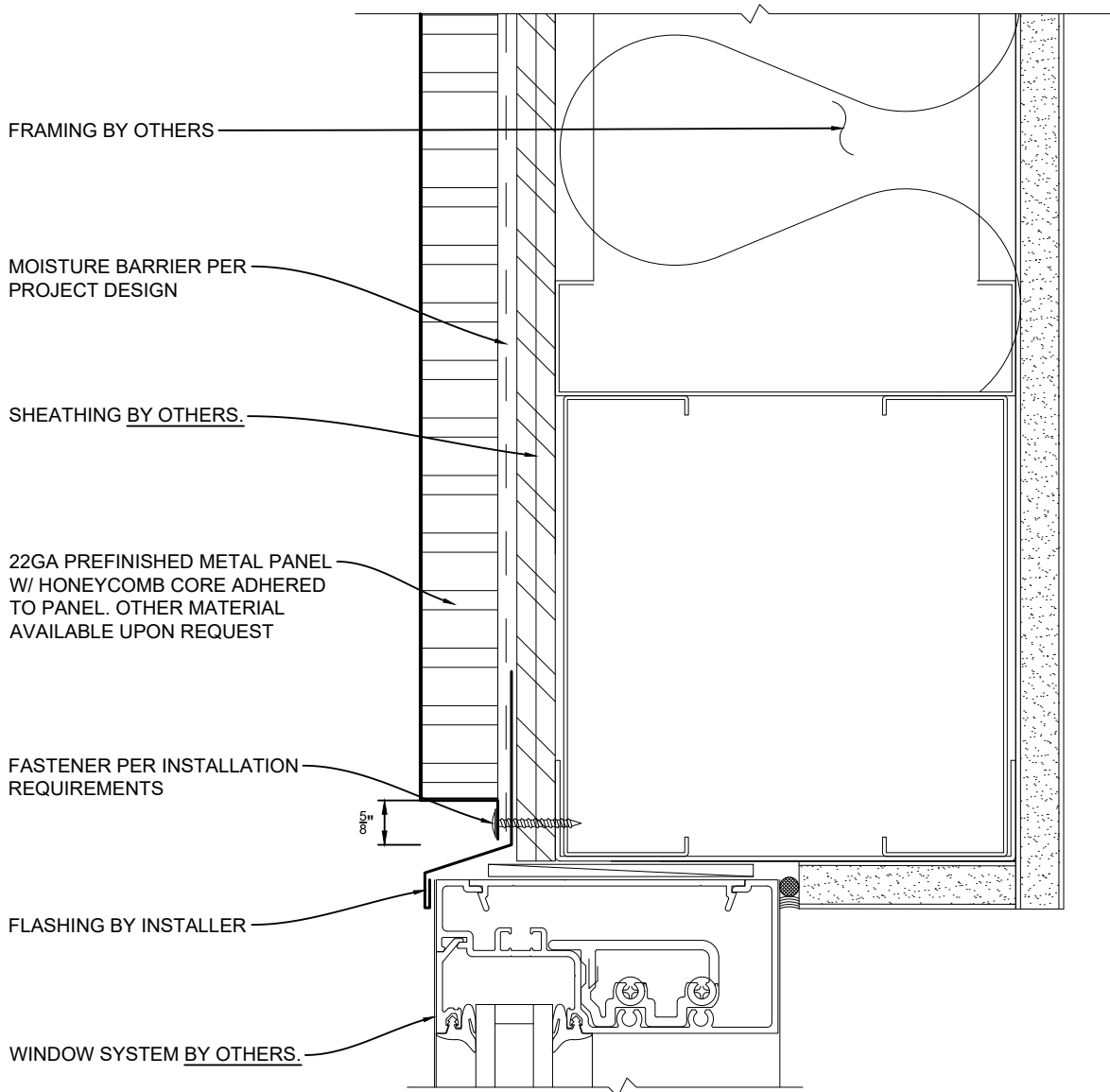
**NOTES:**

1. INSTALLATION TO BE COMPLETED IN ACCORDANCE WITH MANUFACTURER'S SPECIFICATIONS.
2. DO NOT SCALE DRAWING.
3. THIS DRAWING IS INTENDED FOR USE BY ARCHITECTS, ENGINEERS, CONTRACTORS, CONSULTANTS AND DESIGN PROFESSIONALS FOR PLANNING PURPOSES ONLY. THIS DRAWING MAY NOT BE USED FOR CONSTRUCTION.
4. ALL INFORMATION CONTAINED HEREIN WAS CURRENT AT THE TIME OF DEVELOPMENT BUT MUST BE REVIEWED AND APPROVED BY THE PRODUCT MANUFACTURER TO BE CONSIDERED ACCURATE.
5. CONTRACTOR'S NOTE: FOR PRODUCT AND COMPANY INFORMATION VISIT [WWW.PDX-PANELS.COM](http://WWW.PDX-PANELS.COM)



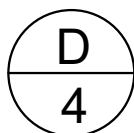
**TYPICAL PARAPET**

PDX SERIES 200 WALL SOLUTION



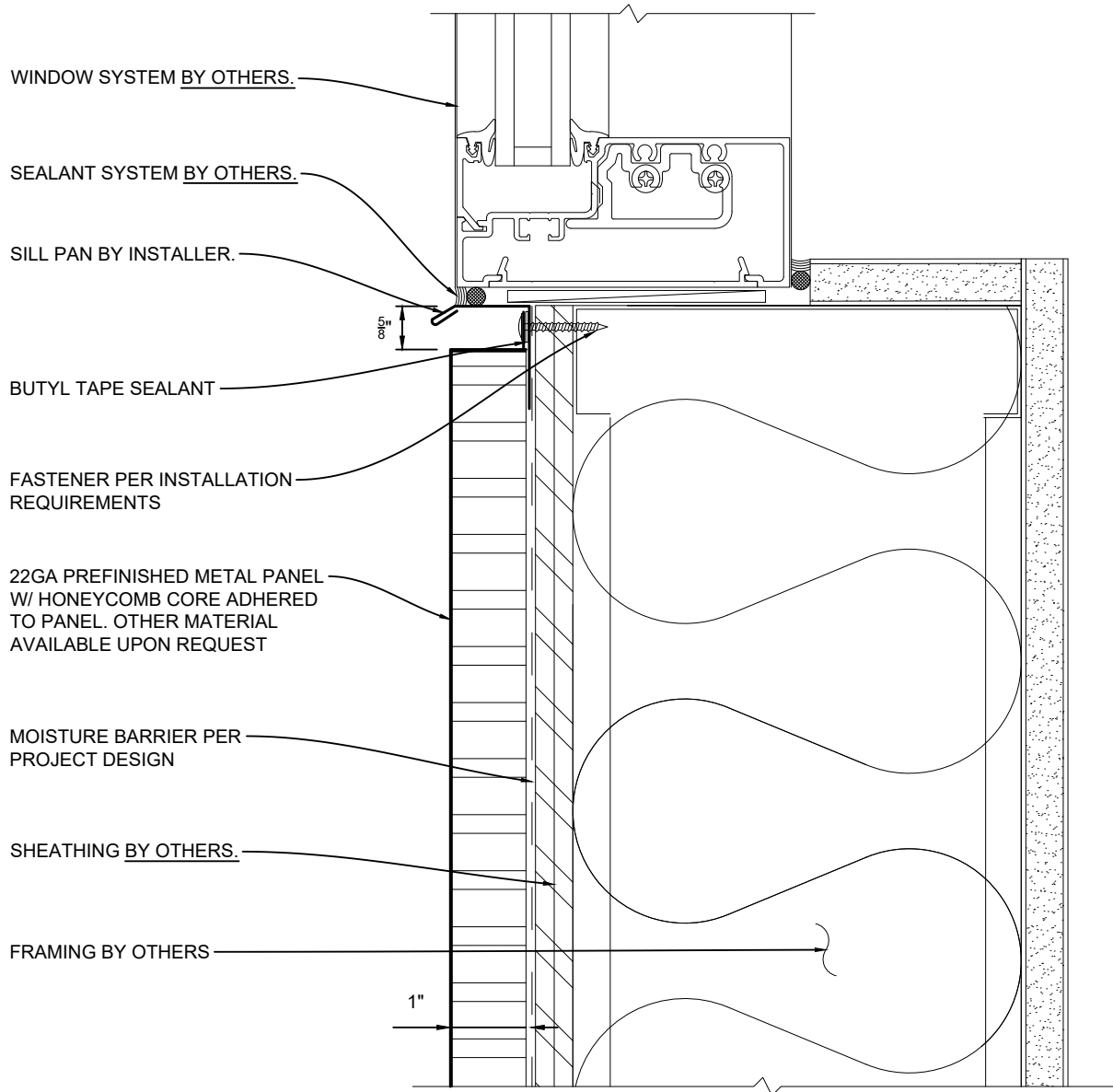
NOTES:

1. INSTALLATION TO BE COMPLETED IN ACCORDANCE WITH MANUFACTURER'S SPECIFICATIONS.
2. DO NOT SCALE DRAWING.
3. THIS DRAWING IS INTENDED FOR USE BY ARCHITECTS, ENGINEERS, CONTRACTORS, CONSULTANTS AND DESIGN PROFESSIONALS FOR PLANNING PURPOSES ONLY. THIS DRAWING MAY NOT BE USED FOR CONSTRUCTION.
4. ALL INFORMATION CONTAINED HEREIN WAS CURRENT AT THE TIME OF DEVELOPMENT BUT MUST BE REVIEWED AND APPROVED BY THE PRODUCT MANUFACTURER TO BE CONSIDERED ACCURATE.
5. CONTRACTOR'S NOTE: FOR PRODUCT AND COMPANY INFORMATION VISIT [WWW.PDX-PANELS.COM](http://WWW.PDX-PANELS.COM)



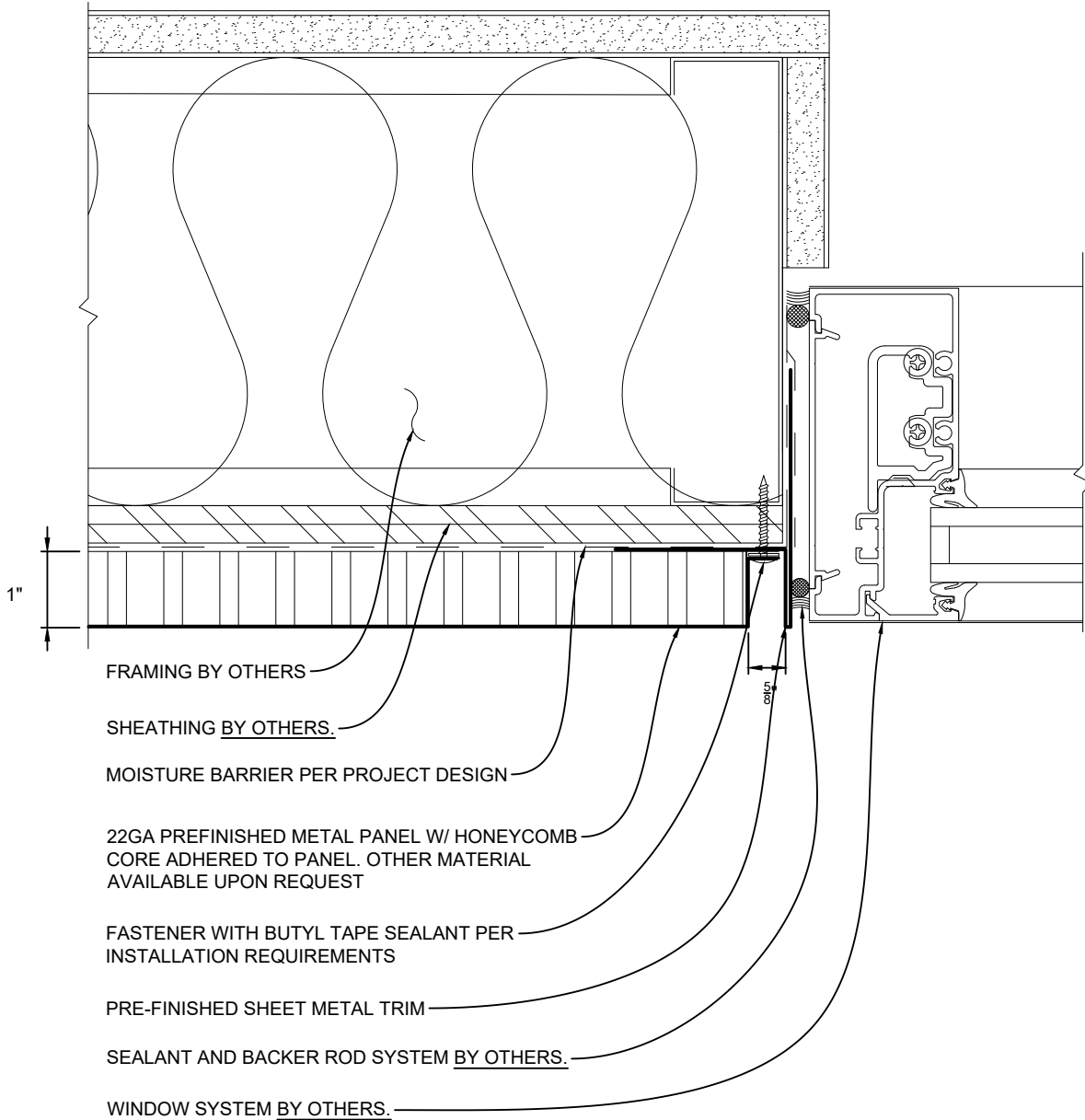
## TYPICAL WINDOW HEAD

PDX SERIES 200 WALL SOLUTION



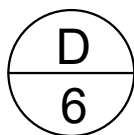
NOTES:

1. INSTALLATION TO BE COMPLETED IN ACCORDANCE WITH MANUFACTURER'S SPECIFICATIONS.
2. DO NOT SCALE DRAWING.
3. THIS DRAWING IS INTENDED FOR USE BY ARCHITECTS, ENGINEERS, CONTRACTORS, CONSULTANTS AND DESIGN PROFESSIONALS FOR PLANNING PURPOSES ONLY. THIS DRAWING MAY NOT BE USED FOR CONSTRUCTION.
4. ALL INFORMATION CONTAINED HEREIN WAS CURRENT AT THE TIME OF DEVELOPMENT BUT MUST BE REVIEWED AND APPROVED BY THE PRODUCT MANUFACTURER TO BE CONSIDERED ACCURATE.
5. CONTRACTOR'S NOTE: FOR PRODUCT AND COMPANY INFORMATION VISIT [WWW.PDX-PANELS.COM](http://WWW.PDX-PANELS.COM)



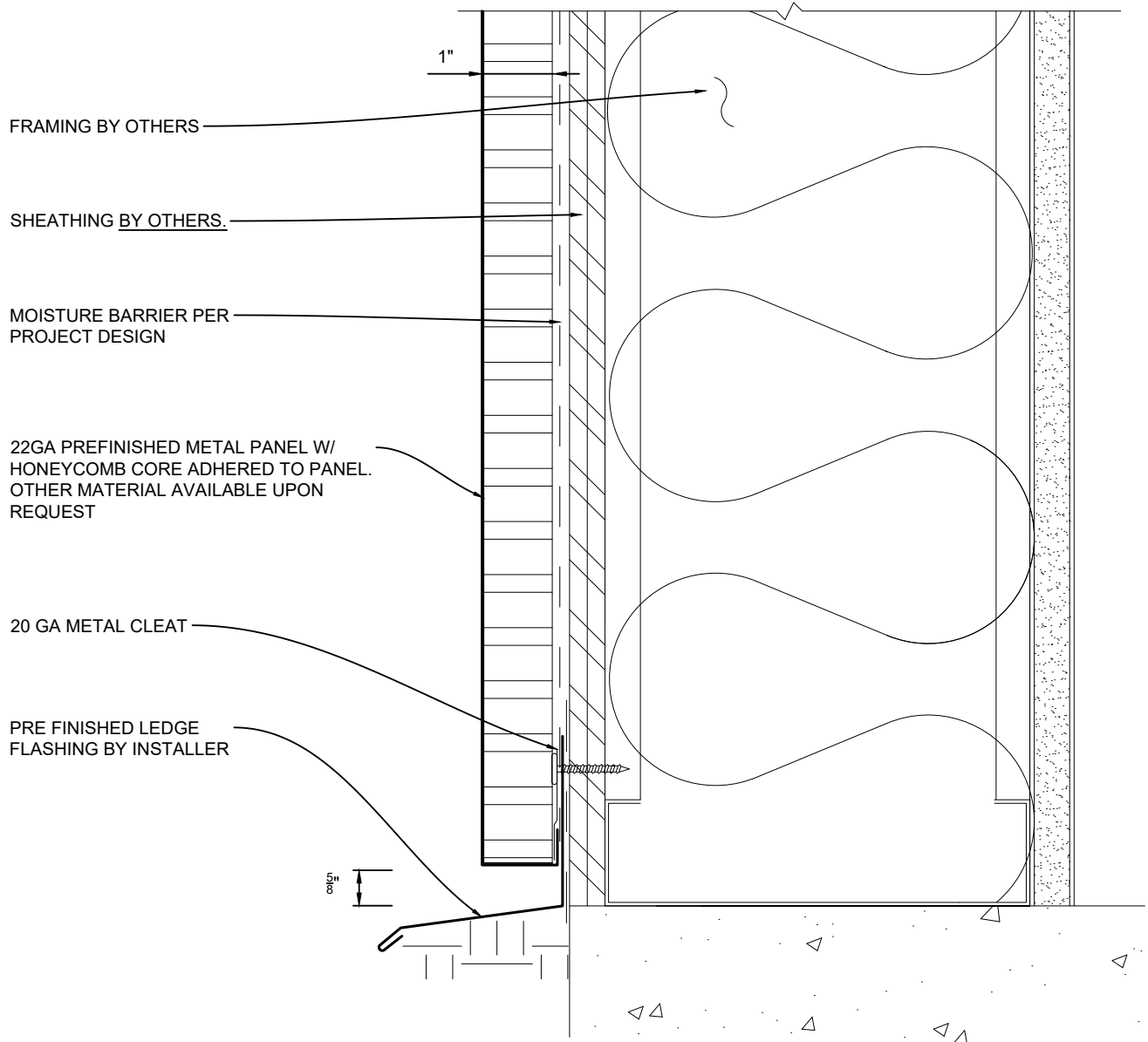
NOTES:

1. INSTALLATION TO BE COMPLETED IN ACCORDANCE WITH MANUFACTURER'S SPECIFICATIONS.
2. DO NOT SCALE DRAWING.
3. THIS DRAWING IS INTENDED FOR USE BY ARCHITECTS, ENGINEERS, CONTRACTORS, CONSULTANTS AND DESIGN PROFESSIONALS FOR PLANNING PURPOSES ONLY. THIS DRAWING MAY NOT BE USED FOR CONSTRUCTION.
4. ALL INFORMATION CONTAINED HEREIN WAS CURRENT AT THE TIME OF DEVELOPMENT BUT MUST BE REVIEWED AND APPROVED BY THE PRODUCT MANUFACTURER TO BE CONSIDERED ACCURATE.
5. CONTRACTOR'S NOTE: FOR PRODUCT AND COMPANY INFORMATION VISIT [WWW.PDX-PANELS.COM](http://WWW.PDX-PANELS.COM)



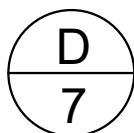
TYPICAL WINDOW JAMB

PDX SERIES 200 WALL SOLUTION



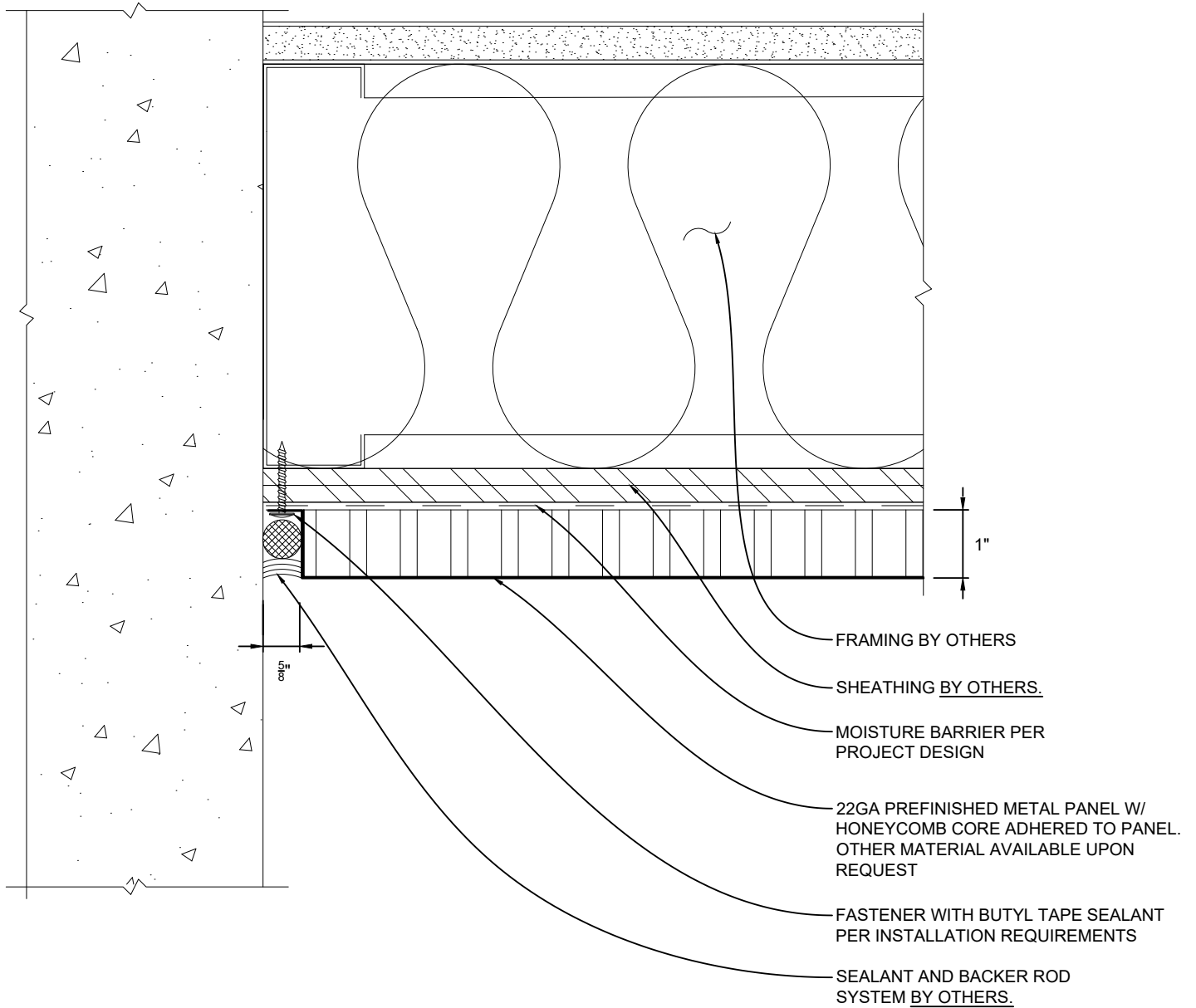
NOTES:

1. INSTALLATION TO BE COMPLETED IN ACCORDANCE WITH MANUFACTURER'S SPECIFICATIONS.
2. DO NOT SCALE DRAWING.
3. THIS DRAWING IS INTENDED FOR USE BY ARCHITECTS, ENGINEERS, CONTRACTORS, CONSULTANTS AND DESIGN PROFESSIONALS FOR PLANNING PURPOSES ONLY. THIS DRAWING MAY NOT BE USED FOR CONSTRUCTION.
4. ALL INFORMATION CONTAINED HEREIN WAS CURRENT AT THE TIME OF DEVELOPMENT BUT MUST BE REVIEWED AND APPROVED BY THE PRODUCT MANUFACTURER TO BE CONSIDERED ACCURATE.
5. CONTRACTOR'S NOTE: FOR PRODUCT AND COMPANY INFORMATION VISIT WWW.PDX-PANELS.COM



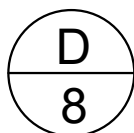
TYPICAL BASE

PDX SERIES 200 WALL SOLUTION



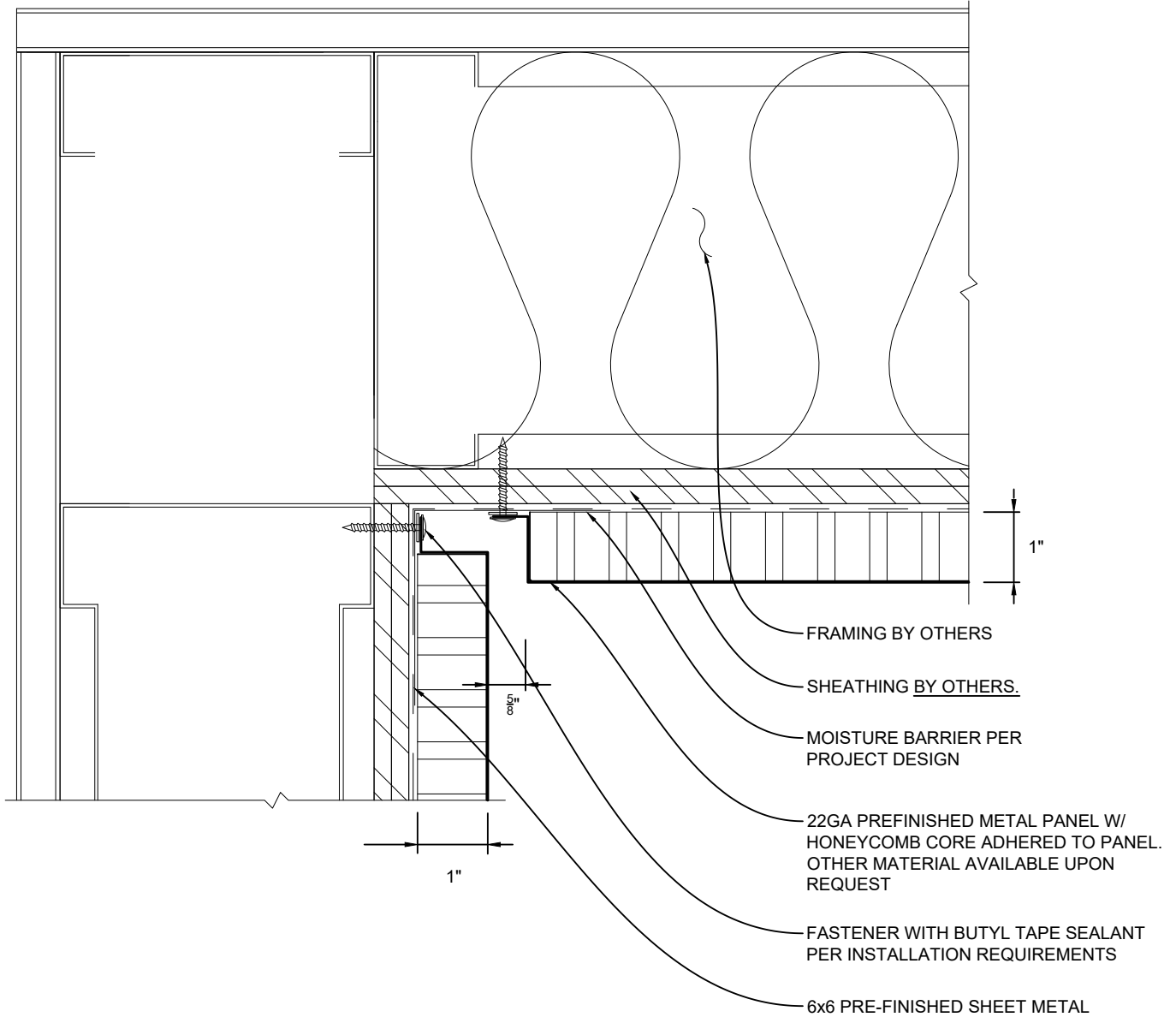
**NOTES:**

1. INSTALLATION TO BE COMPLETED IN ACCORDANCE WITH MANUFACTURER'S SPECIFICATIONS.
2. DO NOT SCALE DRAWING.
3. THIS DRAWING IS INTENDED FOR USE BY ARCHITECTS, ENGINEERS, CONTRACTORS, CONSULTANTS AND DESIGN PROFESSIONALS FOR PLANNING PURPOSES ONLY. THIS DRAWING MAY NOT BE USED FOR CONSTRUCTION.
4. ALL INFORMATION CONTAINED HEREIN WAS CURRENT AT THE TIME OF DEVELOPMENT BUT MUST BE REVIEWED AND APPROVED BY THE PRODUCT MANUFACTURER TO BE CONSIDERED ACCURATE.
5. CONTRACTOR'S NOTE: FOR PRODUCT AND COMPANY INFORMATION VISIT [WWW.PDX-PANELS.COM](http://WWW.PDX-PANELS.COM)



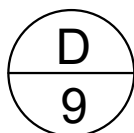
TYPICAL END WALL

PDX SERIES 200 WALL SOLUTION



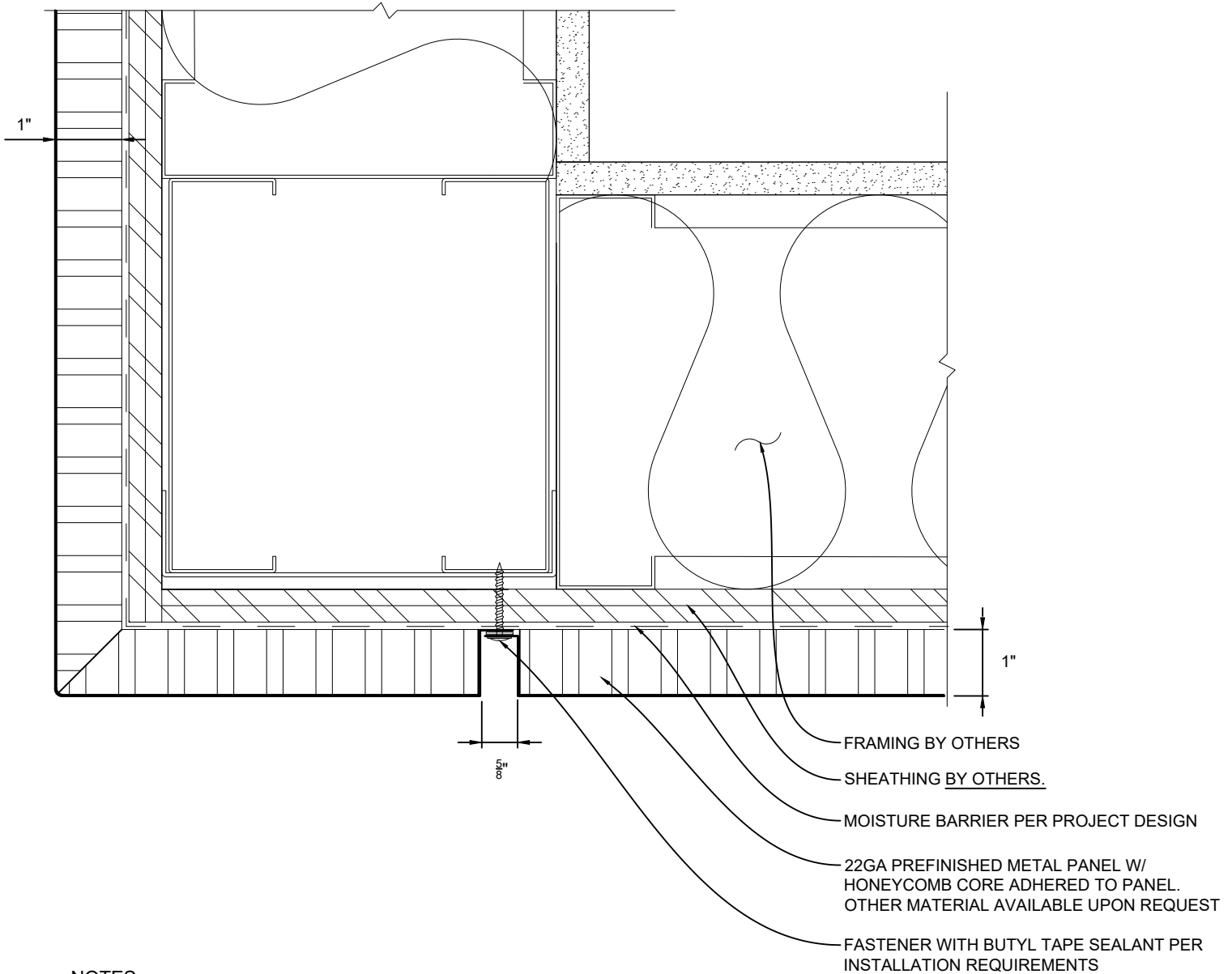
NOTES:

1. INSTALLATION TO BE COMPLETED IN ACCORDANCE WITH MANUFACTURER'S SPECIFICATIONS.
2. DO NOT SCALE DRAWING.
3. THIS DRAWING IS INTENDED FOR USE BY ARCHITECTS, ENGINEERS, CONTRACTORS, CONSULTANTS AND DESIGN PROFESSIONALS FOR PLANNING PURPOSES ONLY. THIS DRAWING MAY NOT BE USED FOR CONSTRUCTION.
4. ALL INFORMATION CONTAINED HEREIN WAS CURRENT AT THE TIME OF DEVELOPMENT BUT MUST BE REVIEWED AND APPROVED BY THE PRODUCT MANUFACTURER TO BE CONSIDERED ACCURATE.
5. CONTRACTOR'S NOTE: FOR PRODUCT AND COMPANY INFORMATION VISIT [WWW.PDX-PANELS.COM](http://WWW.PDX-PANELS.COM)



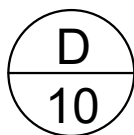
TYPICAL INSIDE CORNER

PDX SERIES 200 WALL SOLUTION



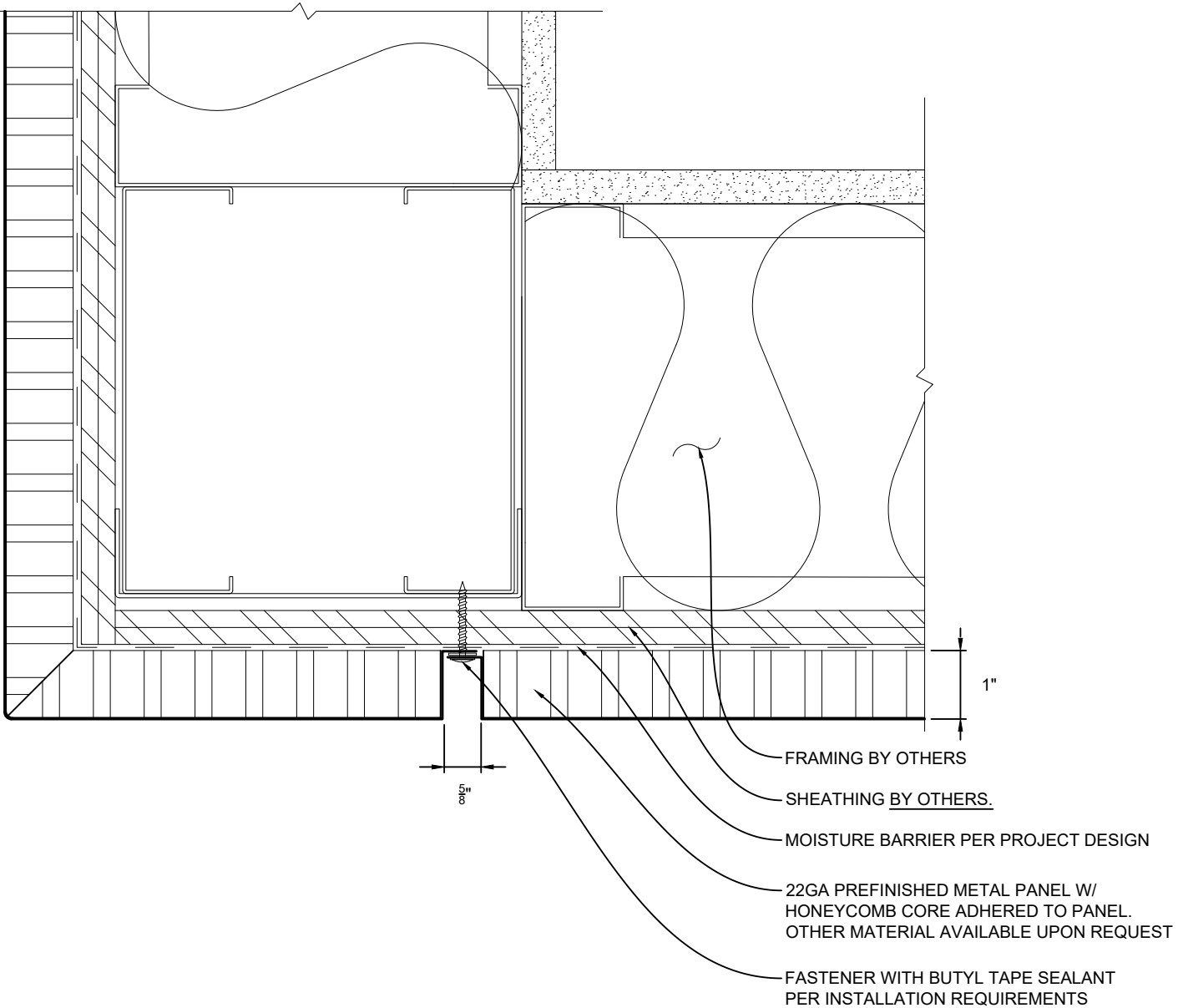
NOTES:

1. INSTALLATION TO BE COMPLETED IN ACCORDANCE WITH MANUFACTURER'S SPECIFICATIONS.
2. DO NOT SCALE DRAWING.
3. THIS DRAWING IS INTENDED FOR USE BY ARCHITECTS, ENGINEERS, CONTRACTORS, CONSULTANTS AND DESIGN PROFESSIONALS FOR PLANNING PURPOSES ONLY. THIS DRAWING MAY NOT BE USED FOR CONSTRUCTION.
4. ALL INFORMATION CONTAINED HEREIN WAS CURRENT AT THE TIME OF DEVELOPMENT BUT MUST BE REVIEWED AND APPROVED BY THE PRODUCT MANUFACTURER TO BE CONSIDERED ACCURATE.
5. CONTRACTOR'S NOTE: FOR PRODUCT AND COMPANY INFORMATION VISIT [WWW.PDX-PANELS.COM](http://WWW.PDX-PANELS.COM)



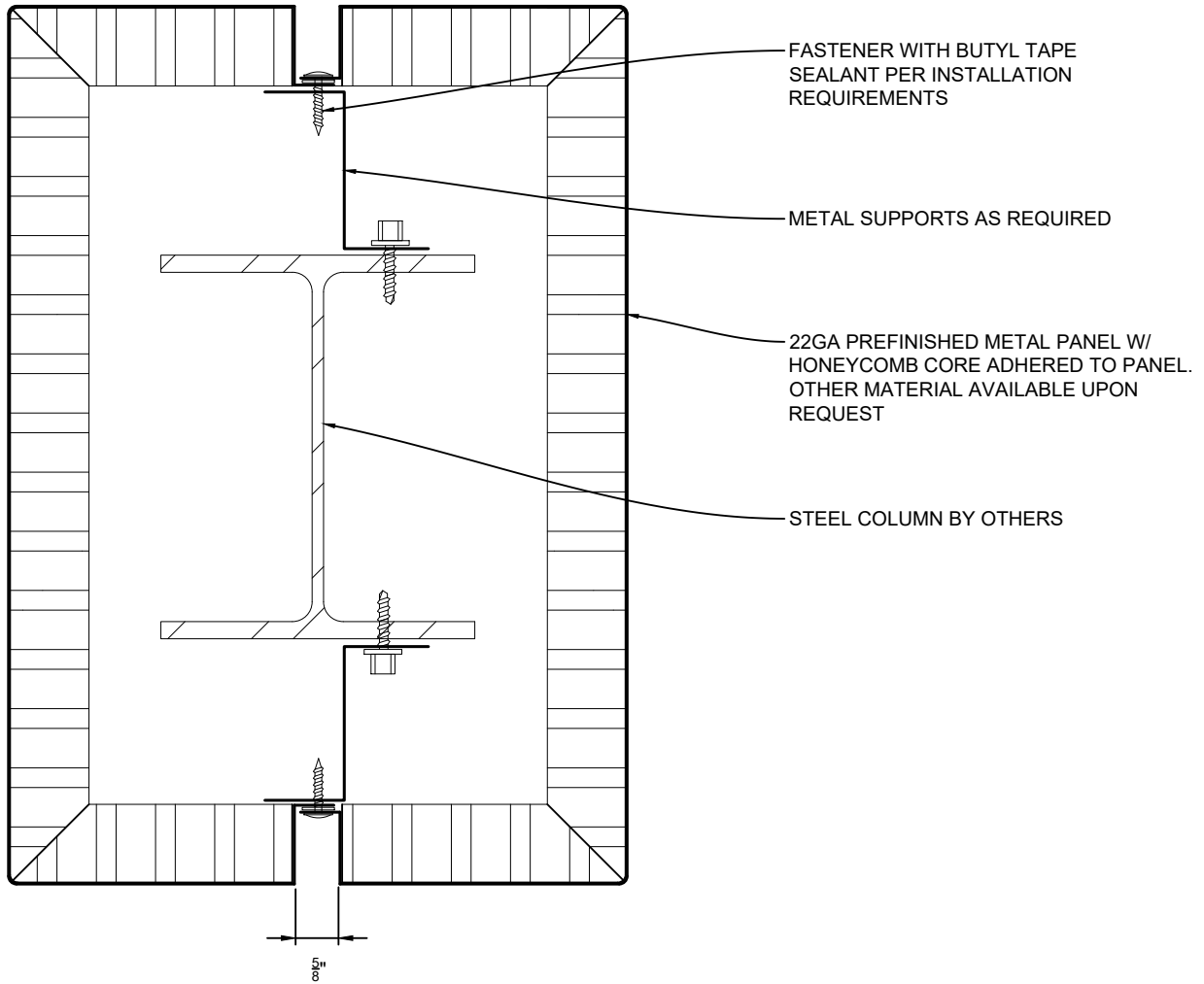
## TYPICAL OUTSIDE CORNER

PDX SERIES 200 WALL SOLUTION



**NOTES:**

1. INSTALLATION TO BE COMPLETED IN ACCORDANCE WITH MANUFACTURER'S SPECIFICATIONS.
2. DO NOT SCALE DRAWING.
3. THIS DRAWING IS INTENDED FOR USE BY ARCHITECTS, ENGINEERS, CONTRACTORS, CONSULTANTS AND DESIGN PROFESSIONALS FOR PLANNING PURPOSES ONLY. THIS DRAWING MAY NOT BE USED FOR CONSTRUCTION.
4. ALL INFORMATION CONTAINED HEREIN WAS CURRENT AT THE TIME OF DEVELOPMENT BUT MUST BE REVIEWED AND APPROVED BY THE PRODUCT MANUFACTURER TO BE CONSIDERED ACCURATE.
5. CONTRACTOR'S NOTE: FOR PRODUCT AND COMPANY INFORMATION VISIT [WWW.PDX-PANELS.COM](http://WWW.PDX-PANELS.COM)



**NOTES:**

1. INSTALLATION TO BE COMPLETED IN ACCORDANCE WITH MANUFACTURER'S SPECIFICATIONS.
2. DO NOT SCALE DRAWING.
3. THIS DRAWING IS INTENDED FOR USE BY ARCHITECTS, ENGINEERS, CONTRACTORS, CONSULTANTS AND DESIGN PROFESSIONALS FOR PLANNING PURPOSES ONLY. THIS DRAWING MAY NOT BE USED FOR CONSTRUCTION.
4. ALL INFORMATION CONTAINED HEREIN WAS CURRENT AT THE TIME OF DEVELOPMENT BUT MUST BE REVIEWED AND APPROVED BY THE PRODUCT MANUFACTURER TO BE CONSIDERED ACCURATE.
5. CONTRACTOR'S NOTE: FOR PRODUCT AND COMPANY INFORMATION VISIT [WWW.PDX-PANELS.COM](http://WWW.PDX-PANELS.COM)

**D**  
**12**
**TYPICAL RECTANGULAR COLUMN COVER**  
 PDX SERIES 200 WALL SOLUTION